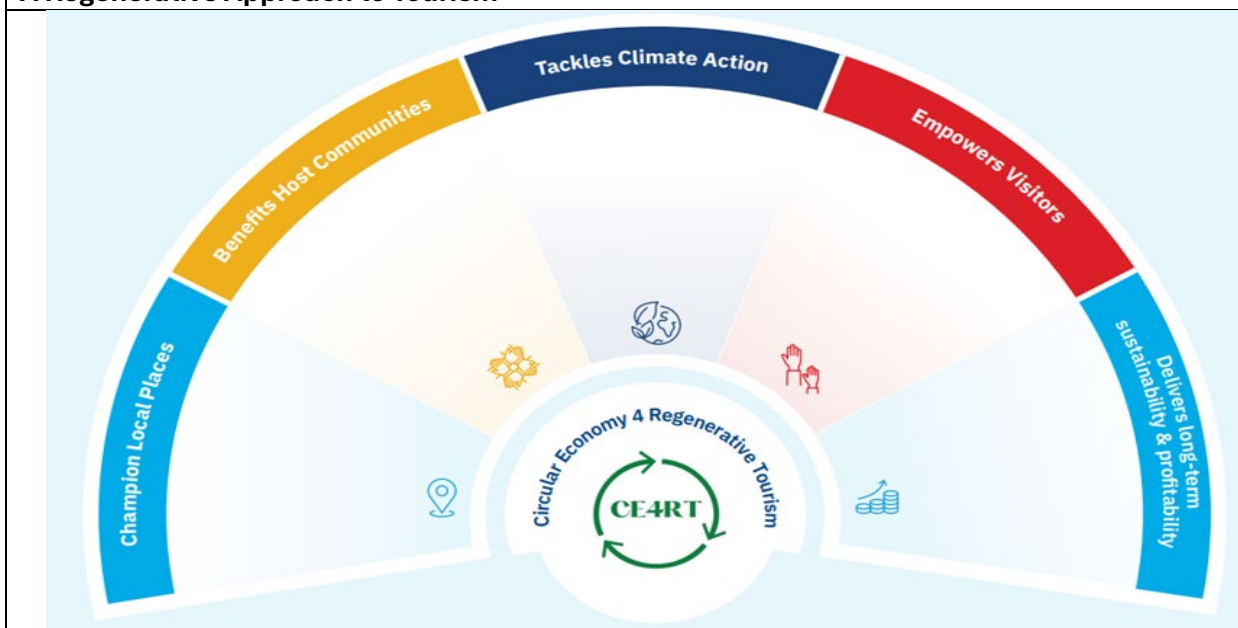


Country:	Ireland
Type of Business:	Accommodation and Group Space
Business Name:	Fuchsia Lane Farm Cottages and Retreat Space

A Regenerative Approach to Tourism



Our Story and Journey – The people, place, uniqueness and values.

We are the current custodians of a family farm that has been in our family since the early 1800s. We diversified into tourism in the late 1990s and take pride in how we offer a Real Rural Retreat to those who wish to experience an authentic rural experience. We offer accommodation in traditional style cottages, farm walks, meditation space in the woodland, bikes, sauna and play areas. We have also converted a traditional round roofed haybarn into a group space for workshops, gatherings and recreation. We have always valued nature and we have maintained our wild spaces, field networks and spaces for biodiversity. We are conscious of how we pass on this land to the next generation and are excited by the possibilities that regenerative tourism offers.

Regenerative Practices

Champions Local Places

- We encourage guests to 'live like a local' and use local businesses
- We actively engage with guests as their host and advise them on local itineraries and things to do
- We connect with local growers and producers to supply their produce to our guests

Benefits Host Communities

- Our guests are encouraged to visit local markets
- We network with local food outlets
- We volunteer in our local community and run a local film club
- We support local festivals such as Field Exchange and also our community hall by donating refunds from the drinks bottle returns scheme

Tackles Climate Action

- We farm according to the ACRES scheme where we have fields for biodiversity, carbon reduction and biodiversity measures
- We have planted 8 acres of native broadleaves and are continuing to plant more as inspired by the Hares Corner project in the Burren
- We are partnering with 'Tree on the Land' and will plant a native Heritage tree orchard in spring 2025 in conjunction with a local business
- We have installed a 21 panel 10kw solar array on our farm building

Empowers Visitors

- We communicate via our online booking system and inform guests of our climate actions in advance of their arrival.
- We have signage relating to refillable natural soaps and detergents

- We supply composting bins for food waste
- We use social media to tell our story of connection with the land and regenerative practices

Delivers Long term Sustainability and Profitability

- We have improved our energy management systems and tools, engineering out unnecessary electricity use
- Our solar array provides almost 80% of our house and haybarn needs
- We have moved to using two EVs, replacing ICE cars
- Our cottages have intelligent heating controls to reduce unnecessary usage
- Our biodiversity actions are helping create a destination for future generations
- We have applied to increase our broadleaf planting thereby creating a resource for nature and the next generation

Future Journey for A Regenerative Tourism Approach

- We seek to reach the type of visitor who wishes to tread more lightly on the planet and are doing this via print articles and improved story telling on our website and social channels
- We wish to expand our EV charging points and develop more solar
- We plan to create ponds and wild areas that will benefit biodiversity as well as offering places of calm to our visitors
- We will continue to offer workshops for those interested in climate action
- We plan to create a momento for guests based on our black sheep story

Image that Represents Our Business and Place



Website, Social Media and Contacts

www.fuchsialanefarm.ie

Instagram and Facebook: @Fuchsialanefarm

Email: hello@fuchsialanefarm.ie

Tel +353 87 2445547

Niall and Inez Heenan